






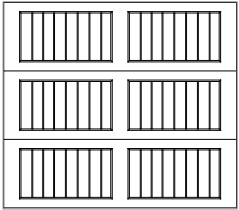
Ridgefield panel, Black finish, Plain Window Square

DOOR FEATURES

- **Three Sections for 7' High Doors**
Provide large steel embossments for a dramatic appearance.
- **Foamed-in-Place Polyurethane Insulation**
Provides thermal efficiency with an R-value of 12*.
- **TorqueMaster® Plus Counter Balance System**
Contains springs safely inside a steel tube to prevent accidental release of tension that could cause injury and features anti-drop safety technology.
- **High Cycle Spring Option**
Choose a 25,000 cycle spring for more than twice the life of a standard torsion spring.
- **Pinch-Resistant Door Panels**
Helps prevent finger injuries while the door is closing.
- **Wind Load Options**  
Available with structural reinforcements for use in coastal or high wind region.
- **Limited Lifetime Warranty** 

*Wayne Dalton uses a calculated door section R-value for our insulated doors.

1 Style



Ridgefield

Doors taller than 7' will have 4-section styling



2 Choose Your Color

Standard Finishes



White



Almond

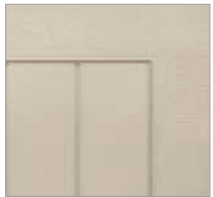


Sandstone



Brown

Premium Finishes



Desert Tan



Gray



Terra Bronze



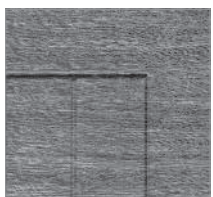
Black

Premium Custom Finishes

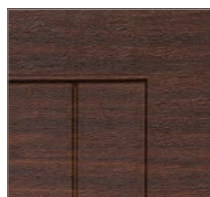


Model 9510 is available with the TruChoice® Color System, Wayne Dalton's custom painting process that offers more than 6,000 colors. See your Dealer for details.

Wood-Grain Finishes



Weathered Gray



Red Walnut

Actual colors may vary from brochure due to fluctuations in the printing process. Always request a color sample from your Dealer for accurate color matching.

3 Choose Your Windows



Plain Window Square



Stockbridge (3-Pane)



Stockbridge (4-Pane)



Stockton (6-Pane)



Stockton (8-Pane)



Plain Window Arched



Wyndbridge (3-Pane)



Wyndbridge (4-Pane)



Somerton (6-Pane)



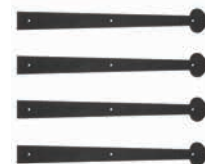
Somerton (8-Pane)

Option of single or double arch for double car doors. Window size and shape may vary slightly based on door size. All windows are made using a single piece of glass with dividers. Clear, obscure and satin etched glass available in insulated and non-insulated.

4 Choose Your Hardware



Arrow



Aspen



Barcelona



Bean



Conifer



Fleur-de-Lis



Spear



Ridgefield panel, Weathered Gray finish, Stockton (6-Pane) windows

AFTER

BEFORE



Ridgefield panel, White finish, Stockbridge (3-Pane) windows, Decorative hardware



Garage Door Design Center

To see this door on your home, visit wayne-dalton.com, or download our Garage Door Design Center app. Upload a photo of your home and experiment with panel designs, color options, window styles and decorative hardware designs. Instant curb appeal awaits you with just a click of your mouse.

Wayne Dalton
GARAGE DOORS

DISTRIBUTED BY:

2501 S. State Hwy. 121 Bus., Ste 200
Lewisville, TX 75067

wayne-dalton.com



© 2021 Wayne Dalton, a Division of Overhead Door Corporation. Consistent with our policy of continuing product improvement, we reserve the right to change product specifications without notice or obligation. Item W900-1083 06/21